

Resolution # 18-075

RESOLUTION AUTHORIZING EXECUTION OF AN
INDUSTRIAL SEWER CONNECTION PERMIT RENEWAL TO:

Picatunny Arsenal
Department of the Army
United States Installation Management Command
Block 70001 / Lot 1
Township of Rockaway

WHEREAS, the Rockaway Valley Regional Sewerage Authority (hereinafter “the Authority”) is authorized by the Sewerage Authorities Law [N.J.S.A. 40:14A-7(11)] to make and enforce rules and regulations for the management and regulation of its business and affairs and/or the use, maintenance, and operation of the sewerage system and any other of its properties and to amend the same; and

WHEREAS, the Authority is a Delegated Local Agency of the New Jersey Department of Environmental Protection and administers an industrial pretreatment program within the service area of the Authority; and

WHEREAS, in accordance with the regulations governing industrial pretreatment programs established at N.J.S.A. 7:14A-1 et. seq., the Authority is required to issue permits and renew permits to industrial discharges within the RVRSA that discharge process wastewater to the Authority’s facility; and

WHEREAS, in compliance with the regulations contained at N.J.A.C. 7:14A-15.10, public notice of the issuance of a draft Industrial Sewer Connection Permit to Picatunny Arsenal was published in the Daily Record on May 2, 2018, and a thirty (30) day public comment period commenced from the date of publication until June 1, 2018, wherein no comments were received.

NOW THEREFORE, BE IT RESOLVED, by the Rockaway Valley Regional Sewerage Authority as follows:

1. The Executive Director, JoAnn Mondsin, is hereby authorized to execute an Industrial Sewer Connection Permit renewal in accordance with the terms and conditions of a

form of Industrial Sewer Connection Permit (ISCP), SIC Code 2844 dated September 1, 2018 marked Schedule "A" attached hereto and a part hereof, a copy of which is also, on file at the offices of RVRSA, to Picatinny Arsenal subject to compliance with any permit condition(s) which must be satisfied prior to issuance of this permit renewal, if any; and also subject to compliance with all remaining engineering requirements, if any.

2. This approval is subject to the payment of the appropriate RVRSA pretreatment annual permit fee.
3. This ISCP is subjected to a flow limitation not to exceed **500,000** gallons per day, monthly average.

I hereby certify that this Resolution was adopted at a meeting of the Rockaway Valley Regional Authority held on July 12, 2018.

On motion of Michael Guadagno

Seconded by Joseph Rossi


And a Roll Call Vote as Follows:

Yeas: (6) Cegelka, Guadagno, Isselin, Lowell, Recchia, Schorno

Nays: (0) None

Abstain: (0) None

Absent: (4) Andes, Corbett, Rossi, and Vincitore



Michael Guadagno
Secretary



FACT SHEET Picatinny Arsenal

This fact sheet sets forth the principal facts and the significant factual, legal, and policy considerations examined during preparation of the draft permit.

PERMIT ACTION: Renewal Industrial Sewer Connection Permit
Effective Date: 08/01/2018 Expiration Date: 07/31/2021

PERMITEE NAME AND ADDRESS: Picatinny Arsenal
U.S. Army Installation Management Command
Building 319, Environmental Directorate
Picatinny Arsenal, NJ 07806-5000

FACILITY NAME AND ADDRESS: Picatinny Arsenal
Route No. 15
Picatinny Arsenal (Township of Rockaway), NJ

FACILITY CONTACT INFORMATION: Carl Appelquist
Environmental Engineer
Phone No.: (973) 724-5517
Fax No.: (973) 724-5398
Email: carl.a.appelquist.civ@mail.mil

Tom Solecki
Chief, Environmental Affairs Office

Michael Maier
Chief, DPW Operations

RECEIVING LOCAL AGENCY: Rockaway Valley Regional Sewerage Authority

RECEIVING COLLECTION SYSTEM: Rockaway Valley Regional Sewerage Authority (meter chamber P-1 and main-trunk line)

DESCRIPTION OF FACILITY OPERATIONS:

The primary activity at this facility is to conduct research and development of armaments and weapons systems. These activities include pilot level development of explosives, propellants, metal parts and total assemblies. This facility is classified as a Significant Industrial User (SIU), SIC code 9711, discharging approximately 500,000 GPD (monthly average) and a maximum one day discharge of 2.0 million gallons per day (MGD) of combined wastestream generated from its research and development facilities and offices.

As of January 2015, American Water Works now owns and operates Picatinny Arsenal's collection system and is responsible for the handling of Picatinny Arsenal's wastewater. Picatinny Arsenal will



continue to own the wastewater and be responsible for what is discharged into the American Water Works collection system.

The wastewater is being monitored and pretreated prior to discharge. The pretreatment consists mainly of the waste-hauling of spent/unused materials and grease traps as per the RVRSA Addendum to the Service Rules, Regulations Concerning Industrial Users and General Sewer Use Requirements: Section 200: General Sewer Use Requirements: 201: Prohibited Wastes: C. Grease, Oil, and Sand Interceptors.

DESCRIPTION OF DISCHARGE LOCATION(S) (see attached Figure 1):

Name: 001
Latitude: 40° 56' 02.84" N
Longitude: 74° 34' 21.01" W
Description: Basement of Building 85 – Prior to Discharge into Main Sewer Line

SUMMARY OF PERMIT CONDITIONS (see attached Table 1):

The following pollutants are regulated: 5-day Biochemical Oxygen Demand (BOD₅), 5-day Carbonaceous Biochemical Oxygen Demand (CBOD₅), Total Suspended Solids (TSS), Total Dissolved Solids (TDS), pH, Oil & Grease (HEM), Total Petroleum Hydrocarbon (TPHC), Total Phosphorus, Ammonia-Nitrogen (NH₃-N), Antimony (Sb), Arsenic (As), Beryllium (Be), Cadmium (Cd), Chromium (Cr), Copper (Cu), Lead (Pb), Mercury (Hg), Molybdenum (Mo), Nickel (Ni), Selenium (Se), Silver (Ag), Thallium (Tl), Zinc (Zn), Phenols, Cyanide, Total Toxic Organics (TTO) and flow.

The basis for the limitations established is summarized in the local limits evaluation report titled RVRSA Local Limit Study, dated November 2014, last revised December 2016, including April 14, 2017 Addendum; approved by the NJDEP on April 24, 2017, and approved by the RVRSA board on August 10, 2017 and on December 14, 2017.

1. Flow: Flow limitation is carried over from the previous permit.
2. Parameters of Concern: None
3. Other Parameters: The following parameters limitations have been updated or have been added as per the local limits study dated, November 2014, last revised December 2016, including April 14, 2017 Addendum; approved by the NJDEP on April 24, 2017, and approved by the RVRSA board on August 10, 2017 and on December 14, 2017.
Limitation updated: CBOD₅, BOD₅, total suspended solids (TSS), ammonia-nitrogen (NH₃-N), oil & grease (HEM), arsenic, cadmium, chromium, copper, cyanide, lead, mercury, nickel, and zinc. **Parameter added:** TPHC
4. Emergency Discharge Plan: Section 27: Emergency Discharge Limitation Plan, has been added to this permit modification.

VARIANCES OR ALTERNATIVES TO PERMIT CONDITIONS:

None



REGULATIONS APPLICABLE TO THIS PERMIT ACTION:

This permit is issued in accordance with N.J.S.A 58:10A-6f, N.J.A.C. 7:14A-19.8, and 40 CFR Part 403.8. Requirements for the contents of this Fact Sheet are in accordance with N.J.A.C. 7:14A-15.8.

INDUSTRIAL PRETREATMENT PROGRAM CONTACT PERSON:

Additional information concerning this permit may be obtained from Natalie Pisarcik, RVRSA IPP Coordinator, at 973-263-1555 ext. 213.



TABLE – 1 : DISCHARGE LIMITATIONS

**PICATINNY ARSENAL
 DEPARTMENT OF THE ARMY**

Sample Location: Basement of Building 85 – Prior to Discharge into Main Sewer Line

Parameter	Daily Max. Limit	Monthly Avg. Limit	Sample Frequency	Sample-Type
Flow	2,000,000 GPD (1)	500,000 GPD (1)	Continuous	Metered
pH	5.5 - 9.5 S.U. (2)		Monthly	Grab
CBOD ₅	500 mg/L (3)(4)		Monthly	Composite
TSS	500 mg/L (3)(4)		Monthly	Composite
TDS	Monitor		Monthly	Composite
NH ₃ -N	80 mg/L (3)(4)		Monthly	Composite
BOD ₅	Monitor		Quarterly	Composite
O & G (HEM)	350 mg/L (3)		Quarterly	Grab
TPHC	150 mg/L (3)	100 mg/L (3)	Quarterly	Grab
Phosphorus (T)	Monitor		Quarterly	Composite
Copper	1.7 mg/L (3)		Semi-Annually	Composite
Chromium	1.3 mg/L (3)		Semi-Annually	Composite
Lead	1.0 mg/L (3)		Semi-Annually	Composite
Nickel	0.8 mg/L (3)		Semi-Annually	Composite
Zinc	2.1 mg/L (3)		Semi-Annually	Composite
Phenols	Monitor		Semi-Annually	Grab
TTO	2.13 mg/L (5)		Semi-Annually	Comp&Grab
Antimony	Monitor (6)		Annually	Composite
Arsenic	0.2 mg/L (3)		Annually	Composite
Beryllium	Monitor (6)		Annually	Composite
Cadmium	0.4 mg/L (3)		Annually	Composite
Mercury	0.06 mg/L (3)		Annually	Composite
Molybdenum	0.3 mg/L (3)		Annually	Composite
Selenium	0.2 mg/L (3)		Annually	Composite
Silver	Monitor (6)		Annually	Composite
Thallium	Monitor (6)		Annually	Composite
Cyanide	0.5 mg/L (3)		Annually	Grab

Notes:

- (1) Monthly average flow of not more than 500,000 gallons per day (GPD), with a maximum one day flow of 2.0 million gallons per day (MGD).



- (2) The pH sample shall be analyzed by a NJDEP certified lab, within 15 minutes of collection of the sample.
- (3) Discharge limits are based upon the RVRSA local limits.
- (4) CBOD₅ or TSS concentration exceeding 250 mg/L and NH₃-N concentration exceeding 40 mg/L are subject to the Surcharge for Wastewaters of Excessive Strength as per Section 8B of this ISCP. Permittee may not discharge over the CBOD₅ limit of 500 mg/L, the TSS limit of 500 mg/L, or the NH₃-N limit of 80 mg/L unless a variance has been issued by the RVRSA providing therefore. Discharges above the stated limitations will be considered a permit violation and subject to applicable enforcement actions.
- (5) TTO: Total Toxic Organics. Limit is based on 40 CFR § 403 regulations. TTO sampling is included in this permit due to the variety of Research and Development activities that are conducted at this facility and the possible exposure of organic/volatile chemicals into the collection system.
- (6) This parameter is considered a "Primary Pollutant Metal".

Additional Notes:

The Self-Monitoring Report (SMR) is due and shall be received by the RVRSA office on or before the 21st day of the month following the sampling month, or next business day (if date shall fall on a weekend and/or holiday). If no pollutant sample is collected or analyzed during a month, then the monthly report shall include at least flow data.

Parameters shall be tested according to monitoring frequency and submitted in accordance to the SMR along with copies of analytical results and the chain of custody. All SMR's submitted must comply with and contain the signatory requirement as required under 40 CFR § 403.6 (a)(2)(ii) and must be signed by a responsible corporate officer as required under 40 CFR § 403.12(I).

Composite samples shall be collected over a twenty-four (24) hour period (programmed to sample every 15 minutes, unless otherwise noted).

The "Quarterly" sampling shall occur during the following months:

- 2018: January, April, July, October
- 2019: February, May, August, November
- 2020: March, June, September, December
- 2021: January, April, July, October



The "Semi-Annually" sample period shall correspond to the January-June and July-December calendar period.

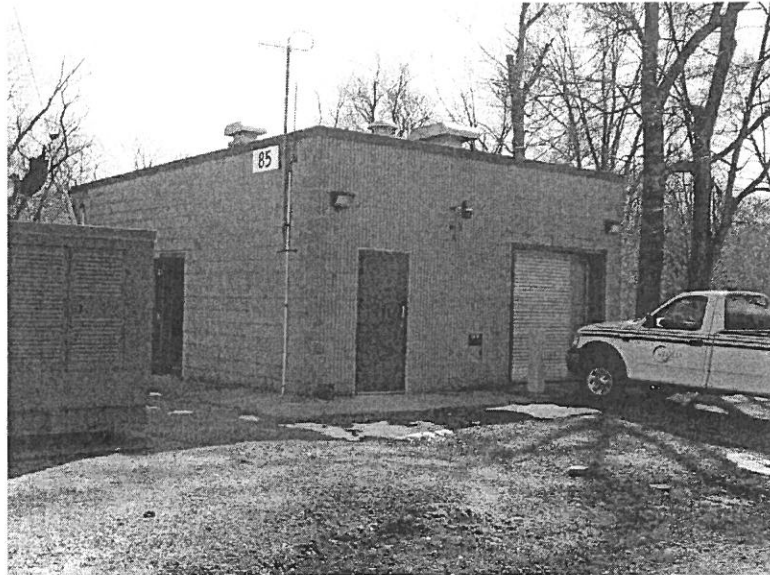
The "Annually" sample period shall correspond to the January – December calendar year.

Copies of manifests for process wastewater trucked offsite for disposal shall be made available for review by our offices.

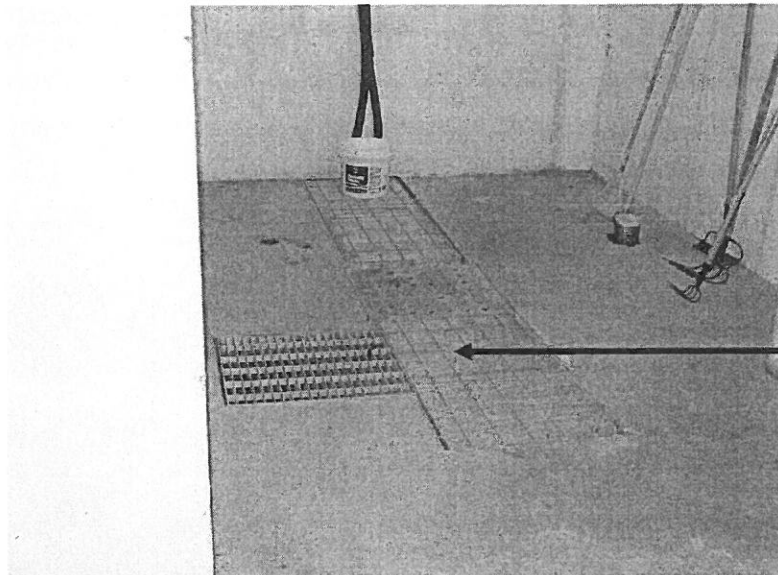
FIGURE 1: Facility Discharge Location

PICATINNY ARSENAL

SAMPLING LOCATION: (Discharge location: 001)
Basement of Building 85 – Prior to Discharge into Main Sewer Line



Building 85 (Picatinny Arsenal)



BLUE Arrow indicating Sampling Probe Location.