

Resolution 18-071

RESOLUTION AUTHORIZING EXECUTION OF AN
INDUSTRIAL SEWER CONNECTION PERMIT RENEWAL TO:
North Jersey Media Group Inc.
Block 20001 / Lots 3.04 & 3.05
Township of Rockaway

WHEREAS, the Rockaway Valley Regional Sewerage Authority (hereinafter “the Authority”) is authorized by the Sewerage Authorities Law [N.J.S.A. 40:14A-7(11)] to make and enforce rules and regulations for the management and regulation of its business and affairs and/or the use, maintenance, and operation of the sewerage system and any other of its properties and to amend the same; and

WHEREAS, the Authority is a Delegated Local Agency of the New Jersey Department of Environmental Protection and administers an industrial pretreatment program within the service area of the Authority; and

WHEREAS, in accordance with the regulations governing industrial pretreatment programs established at N.J.S.A. 7:14A-1 et. seq., the Authority is required to issue permits and renew permits to industrial discharges within the RVRSA that discharge process wastewater to the Authority’s facility; and

WHEREAS, in compliance with the regulations contained at N.J.A.C. 7:14A-15.10, public notice of the issuance of a draft Industrial Sewer Connection Permit to North Jersey Media Group Inc. was published in the Daily Record on April 17, 2018, and a thirty (30) day public comment period commenced from the date of publication until May 16, 2018, wherein no comments were received.

NOW THEREFORE, BE IT RESOLVED, by the Rockaway Valley Regional Sewerage Authority as follows:

1. The Executive Director, JoAnn Mondsinì, is hereby authorized to execute an Industrial Sewer Connection Permit renewal in accordance with the terms and conditions of a form of Industrial Sewer Connection Permit (ISCP), SIC Code 2844 dated August 1, 2018 marked Schedule “A” attached hereto and a part hereof, a copy of which is also,

on file at the offices of RVRSA, to North Jersey Media Group Inc., subject to compliance with any permit condition(s) which must be satisfied prior to issuance of this permit renewal, if any; and also subject to compliance with all remaining engineering requirements, if any.

2. This approval is subject to the payment of the appropriate RVRSA pretreatment annual permit fee.
3. This ISCP is subjected to a flow limitation not to exceed **22,680** gallons per day, monthly average.

I hereby certify that this Resolution was adopted at a meeting of the Rockaway Valley Regional Authority held on June 14, 2018.

On motion of Glenn Corbett

Seconded by John Cegelka

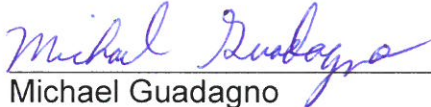
And a Roll Call Vote as Follows:

Yeas: (9) Andes, Cegelka, Corbett, Guadagno, Isselin, Lowell, Recchia, Rossi, Schorno

Nays: (0) None

Abstain: (1) Vincitore

Absent: (0) None



Michael Guadagno
Secretary



FACT SHEET
North Jersey Media Group Inc.

This fact sheet sets forth the principal facts and the significant factual, legal, and policy considerations examined during preparation of the draft permit.

PERMIT ACTION: Renewal Industrial Sewer Connection Permit
Effective Date: 08/01/2018 Expiration Date: 07/31/2021

PERMITEE NAME AND ADDRESS: North Jersey Media Group Inc.
100 Commons Way
Rockaway, NJ 07866

FACILITY NAME AND ADDRESS: North Jersey Media Group Inc.
100 Commons Way
Rockaway, NJ 07866

FACILITY CONTACT INFORMATION: Frank Devetori
Facilities Manager
Phone No.: (973)586-8151
Fax No.: (973) 586-8285
Email: Devetori@northjersey.com

RECEIVING LOCAL AGENCY: Rockaway Valley Regional Sewerage Authority

RECEIVING COLLECTION SYSTEM: Local collection system owned and operated by the Township of Rockaway.

DESCRIPTION OF FACILITY OPERATIONS:

The North Jersey Media Group Inc. primary activity at this facility is newspaper printing, with accompanying warehouse and office space. North Jersey Media Group Inc.'s SIC code is 2711 (Newspaper Publishing, or Publishing and Printing). This facility is classified as an Industrial User of Concern discharging approximately 22,680 gallons per day (GPD), monthly average, of combined wastestream (17,680 GPD – Sanitary waste, 5,000 GPD Process waste) generated from its printing press operation and offices. The wastes are metered leaving the facility. Sanitary and process wastes are metered and calculated separately; one (1) meter for process wastes and two (2) meters are used to calculate the sanitary waste discharge. All three (3) meters are read monthly (beginning of the month) and are calibrated annually.

The wastewater is being pretreated prior to discharge. The pretreatment consists of neutralization (pH correction), and spill protection.



DESCRIPTION OF DISCHARGE LOCATION(S) (see attached Figure 1):

Name: 001
Latitude: 40° 55' 27.32" N
Longitude: 74° 29' 37.44" W
Description: Settling Tank (located inside building) – PROCESS ONLY

SUMMARY OF PERMIT CONDITIONS (see attached Table 1):

The following pollutants are regulated: BOD₅, CBOD₅, Total Suspended Solids (TSS), Total Dissolved Solids (TDS), pH, Oil & Grease (HEM), Total Petroleum Hydrocarbon (TPHC), Total Phosphorus, Ammonia-Nitrogen (NH₃-N), Arsenic (As), Cadmium (Cd), Chromium (Cr), Copper (Cu), Lead (Pb), Mercury (Hg), Molybdenum (Mo), Nickel (Ni), Selenium (Se), Zinc (Zn), and flow.

The basis for the limitations established is summarized in the local limits evaluation report titled RVRSA Local Limit Study, dated November 2014, last revised December 2016, including April 14, 2017 Addendum; approved by the NJDEP on April 24, 2017, and approved by the RVRSA board on August 10, 2017 and on December 14, 2017.

Below is a summary of key aspects of this renewal application.

1. *Flow:* Flow limitation is carried over from the previous permit.
2. *Parameters of Concern:* During the previous permit cycle, NJMG exceeded the permit limits of the following parameters: BOD, oil & grease and pH
3. *Other Parameters:* The following parameters limitations have been updated or have been added as per the local limits study dated, November 2014, last revised December 2016, including April 14, 2017 Addendum; approved by the NJDEP on April 24, 2017, and approved by the RVRSA board on August 10, 2017 and on December 14, 2017. **Limitation updated:** CBOD₅, BOD₅, total suspended solids (TSS), ammonia-nitrogen (NH₃-N), oil & grease (HEM), arsenic, cadmium, chromium, copper, lead, mercury, nickel, and zinc. **Parameters added:** TPHC, molybdenum, and selenium

VARIANCES OR ALTERNATIVES TO PERMIT CONDITIONS:

None

REGULATIONS APPLICABLE TO THIS PERMIT ACTION:

This permit is issued in accordance with N.J.S.A 58:10A-6f, N.J.A.C. 7:14A-19.8, and 40 CFR Part 403.8. Requirements for the contents of this Fact Sheet are in accordance with N.J.A.C. 7:14A-15.8.

INDUSTRIAL PRETREATMENT PROGRAM CONTACT PERSON:



Additional information concerning this permit may be obtained from Natalie Pisarcik, RVRSA IPP Coordinator, at 973-263-1555 ext. 213.

TABLE – 1 : DISCHARGE LIMITATIONS

NORTH JERSEY MEDIA GROUP INC.

PROCESS Sample Location: 001: Settling Tank (located inside building)

Parameter	Daily Max. Limit	Mo. Avg. Limit	Sample Frequency	Sample-Type
Flow	Report	22,680 GPD (4)	Continuous	Metered
CBOD ₅	500 mg/L (1)(2)		Monthly	Composite
TSS	500 mg/L (1)(2)		Monthly	Composite
TDS	Report		Monthly	Composite
pH	5.5 - 9.5 SU (1)(3)		Monthly	Grab
O & G (HEM)	350 mg/L (1)		Monthly	Grab
NH ₃ -N	80 mg/L (1)(2)		Monthly	Composite
BOD ₅	Report		Quarterly	Composite
Phenols	Report		Quarterly	Grab
Phosphorus (T)	Report		Quarterly	Composite
TPHC	150 mg/L (1)	100 mg/L (1)	Quarterly	Grab
Arsenic	0.2 mg/L (1)		Annually	Composite
Cadmium	0.4 mg/L (1)		Annually	Composite
Chromium	1.3 mg/L (1)		Annually	Composite
Copper	1.7 mg/L (1)		Annually	Composite
Lead	1.0 mg/L (1)		Annually	Composite
Mercury	0.06 mg/L (1)		Annually	Composite
Nickel	0.8 mg/L (1)		Annually	Composite
Selenium	0.2 mg/L (1)		Annually	Composite
Silver	Report		Annually	Composite
Zinc	2.1 mg/L (1)		Annually	Composite
Cyanide	0.5 mg/L (1)		Annually	Grab

Notes:

- (1) Discharge limits are based upon the RVRSA local limits.
- (2) CBOD₅ or TSS concentration exceeding 250 mg/l and NH₃-N concentration exceeding 40 mg/L are subject to the Surcharge for Wastewaters of Excessive Strength as per Section 8B of this ISCP. Permittee may not discharge over the CBOD₅ limit of 500 mg/L, the TSS limit of 500 mg/L, or the NH₃-N limit of 80 mg/L unless a variance has been issued by the



RVRSA providing therefore. Discharges above the above stated limitations will be considered a permit violation and subject to applicable enforcement actions.

- (3) The pH sample shall be analyzed by a NJDEP certified lab, within 15 minutes of collection of the sample.
- (4) Flow limitation is a total of combined process sand sanitary flows. Monthly average flow of not more than 22,680 gallons per day (GPD).

Additional Notes:

The Self Monitoring Report (SMR) is due and shall be received by the RVRSA office on or before the 21st day of the month following the sampling month, or next business day (if date shall fall on a weekend and/or holiday). If no pollutant sample is collected or analyzed during a month, then the monthly report shall include at least flow data.

Parameters shall be tested according to monitoring frequency and submitted in accordance to the SMR along with copies of analytical results and the chain of custody. All SMR's submitted must comply and contain the signatory requirement as required under 40 CFR § 403.6 (a)(2)(ii) and it must be signed by a responsible corporate officer as required under 40 CFR § 403.12(l).

Composite samples shall be collected over a twenty-four (24) hour period (programmed to sample every 15 minutes, unless otherwise stated). Each composite sample shall be a representative composite of the regulated discharge (e.g. 24-hour composite sample for 24-hour operation/discharge).

"Quarterly" sampling shall occur during the following months:

- 2018: January, April, July, October
- 2019: February, May, August, November
- 2020: March, June, September, December
- 2021: January, April, July, October

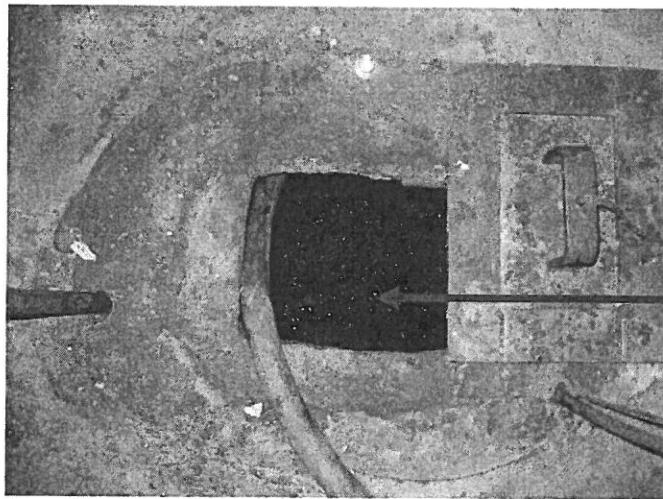
The "Annually" sample period shall correspond to the January – December calendar year.

Copies of manifests for process wastewater trucked offsite for disposal shall be made available for review by our offices.

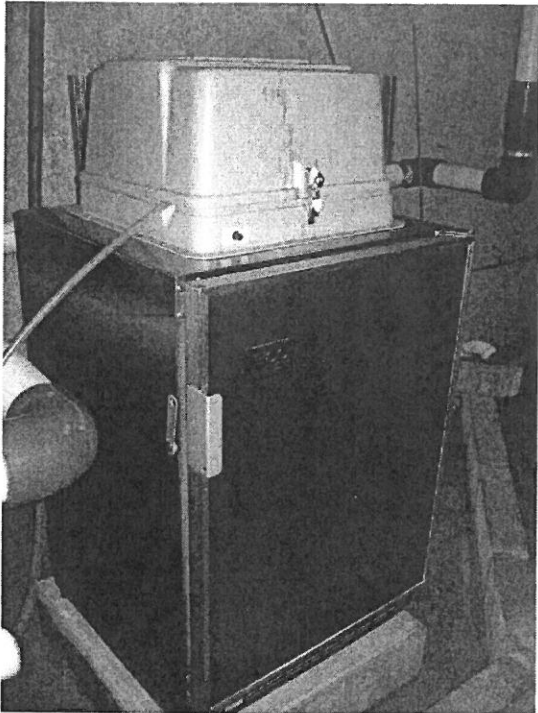
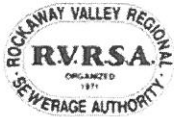
FIGURE 1: Sampling Location Pictures

NORTH JERSEY MEDIA GROUP INC.

SAMPLING LOCATION (Discharge location: 001)
Settling Tank (located inside building)



Sampling Point: Located in Sewer Room in Building



NJMG Sampler Refrigerator